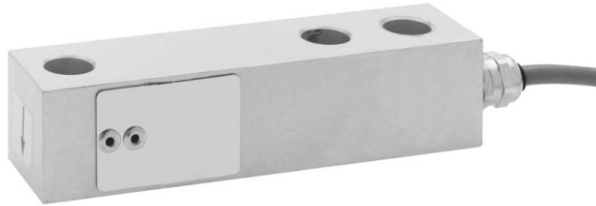


Aluminum Shear Beam Load Cell



FEATURES

- Capacities 250 - 1000kg
- Low profile for industrial platforms
- Anodized aluminum construction
- 6-Wire (sense) circuit
- IP67 protection
- Low cost

APPLICATIONS

- Low profile platform
- Medical bed weighing
- Tank and silo weighing

DESCRIPTION

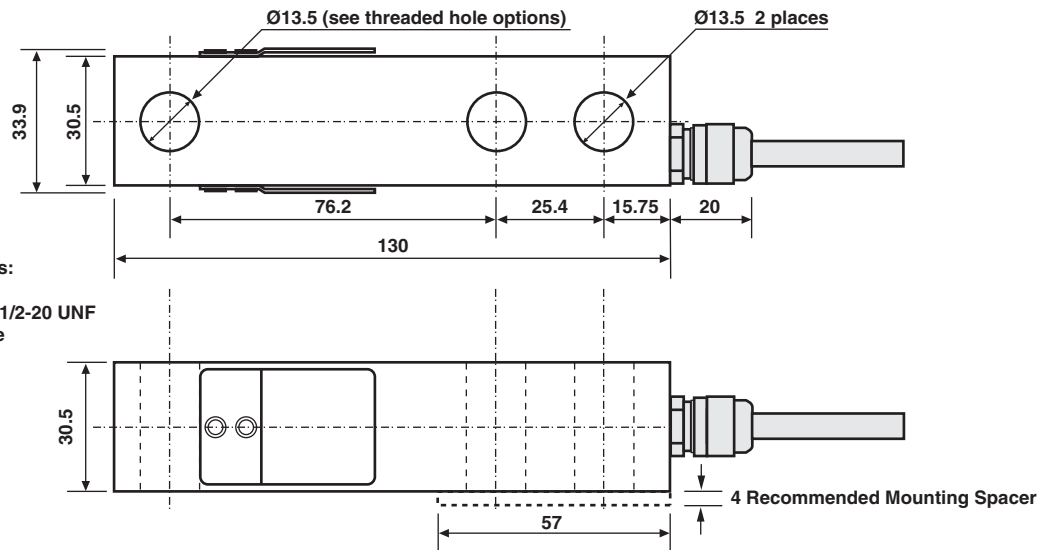
Model 3310 is a low profile shear beam load cell designed for high accuracy platform scales, pallet scales and process weighing applications.

It has high immunity to shock or side loading and is available in 2mV/V sensitivity.

A special humidity resistant protective coating assures long term stability over the entire compensated temperature range.

The two additional sense wires feed back the voltage reaching the load cell. Complete compensation of changes in lead resistance due to temperature change and/or cable extension is achieved by feeding this voltage into the appropriate electronics.

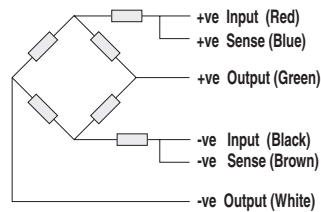
OUTLINE DIMENSIONS in millimeters



SPECIFICATIONS

PARAMETER	VALUE			UNIT
	E	F	G	UNITS
Grade				
Rated capacity: metric	250, 500, 750, 1000			kg
Rated output	2.0±0.10%			mV/V
Zero return, 30 min.	0.050	0.025	0.0170	±% of applied load
Total error	0.050	0.030	0.0200	±% of applied load
Temperature effect on zero	0.007	0.0035	0.0023	±% of rated output/°C
Temperature effect on output	0.004	0.0014	0.0012	±% of applied load/°C
Zero balance	3.0	2.0	2.0	±% of rated output
Temperature range: operating	-10 to +70			°C
Temperature range: compensated	- 10 to +40			°C
Safe overload	150			±% of rated capacity
Ultimate overload	300			±% of rated capacity
Excitation, recommended	10			Vdc or Vac
Excitation, maximum	15			Vdc or Vac
Input impedance	415±15			Ohms
Output impedance	350±3			Ohms
Insulation impedance	>2000			MegaOhms
Deflection at rated capacity	<0.4			mm
Weight	0.5			kg
Construction	Anodized aluminum			
Environmental protection	IP67			
Cable	3 meters (standard), 6 wire, Polyurethane jacket, Dual floating screen			
Recommended torque	100			lb-ft
	136			N*m

Wiring Schematic Diagram



www.ingematic.net

Disclaimer

All product specifications and data are subject to change without notice.

Vishay Precision Group, Inc., its affiliates, agents, and employees, and all persons acting on its or their behalf (collectively, "Vishay Precision Group"), disclaim any and all liability for any errors, inaccuracies or incompleteness contained herein or in any other disclosure relating to any product.

Vishay Precision Group disclaims any and all liability arising out of the use or application of any product described herein or of any information provided herein to the maximum extent permitted by law. The product specifications do not expand or otherwise modify Vishay Precision Group's terms and conditions of purchase, including but not limited to the warranty expressed therein, which apply to these products.

No license, express or implied, by estoppel or otherwise, to any intellectual property rights is granted by this document or by any conduct of Vishay Precision Group.

The products shown herein are not designed for use in medical, life-saving, or life-sustaining applications unless otherwise expressly indicated. Customers using or selling Vishay Precision Group products not expressly indicated for use in such applications do so entirely at their own risk and agree to fully indemnify Vishay Precision Group for any damages arising or resulting from such use or sale. Please contact authorized Vishay Precision Group personnel to obtain written terms and conditions regarding products designed for such applications.

Product names and markings noted herein may be trademarks of their respective owners.